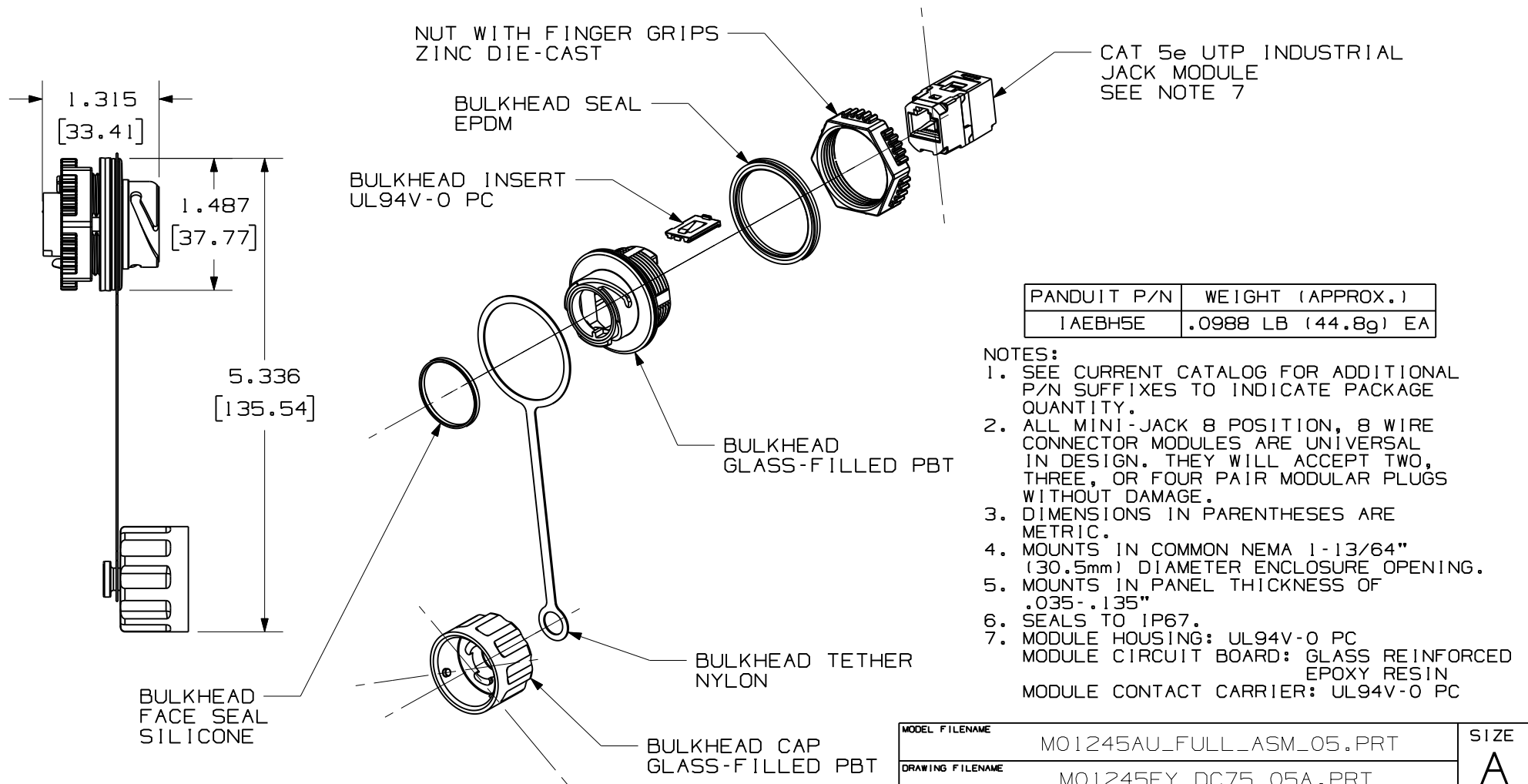


THIS COPY IS PROVIDED ON A RESTRICTED BASIS AND IS NOT TO BE USED IN ANY WAY DETRIMENTAL TO THE INTERESTS OF PANDUIT CORP.



PANDUIT P/N	WEIGHT (APPROX.)
1AEBH5E	.0988 LB (44.8g) EA

- NOTES:**
- SEE CURRENT CATALOG FOR ADDITIONAL P/N SUFFIXES TO INDICATE PACKAGE QUANTITY.
 - ALL MINI-JACK 8 POSITION, 8 WIRE CONNECTOR MODULES ARE UNIVERSAL IN DESIGN. THEY WILL ACCEPT TWO, THREE, OR FOUR PAIR MODULAR PLUGS WITHOUT DAMAGE.
 - DIMENSIONS IN PARENTHESES ARE METRIC.
 - MOUNTS IN COMMON NEMA 1-13/64" (30.5mm) DIAMETER ENCLOSURE OPENING.
 - MOUNTS IN PANEL THICKNESS OF .035-.135"
 - SEALS TO IP67.
 - MODULE HOUSING: UL94V-0 PC
 MODULE CIRCUIT BOARD: GLASS REINFORCED EPOXY RESIN
 MODULE CONTACT CARRIER: UL94V-0 PC

MODEL FILENAME	MO1245AU_FULL_ASM_05.PRT	SIZE	A
DRAWING FILENAME	MO1245EY_DC75_05A.PRT		

**INDUSTRIALNET TX5e CONNECTOR
JACK MODULE WITH BULKHEAD
CUSTOMER DRAWING**

<p>PANDUIT™ CORP. TINLEY PARK, ILL 60477</p>	I.I. NUMBER
	PRODUCT SPEC
<p>THIRD ANGLE PROJECTION</p>	WORK INSTRUCTION
	SCALE
<p>ALL DIMENSIONS ARE GIVEN IN INCHES, UNLESS OTHERWISE SPECIFIED.</p> <p>DIMENSIONAL TOLERANCES ARE: (.X) ± (.XXX) ±.010(.25) (.XX) ±.03(.8) ANGLES ±</p>	NONE
DRAWN BY BJN	REVIEW DRAWING NUMBERS
DATE 10-30-06	
CHK'D CEF	
	PART NO. SEE CHART
	DRAWING NO. 01245-75

REV	DATE	BY	CHK	DESCRIPTION	ECN	R	CUST	SUP	OTH
2	3-19-08	BJN	RJDU	D. REVISED, REDRAWN, RENAMED TO EY, ADDED MATERIALS & WEIGHT	01245-75		VMB		
1	11-15-07	BJN	EJH	C. REMVD™ FROM DWG DESCRIPTION B. ADDED MATERIAL DESCRIPTIONS A. UPDATED MODEL TO REV 05	01245-75		VMB		
R	10-30-06	BJN	CEF	RELEASED TO PRODUCTION	01245-75		CEF		